



**Value
Stream
Mapping**

Why do you need Value Stream Mapping?

In today's global economy, most people are aware that they cannot afford to stand still.

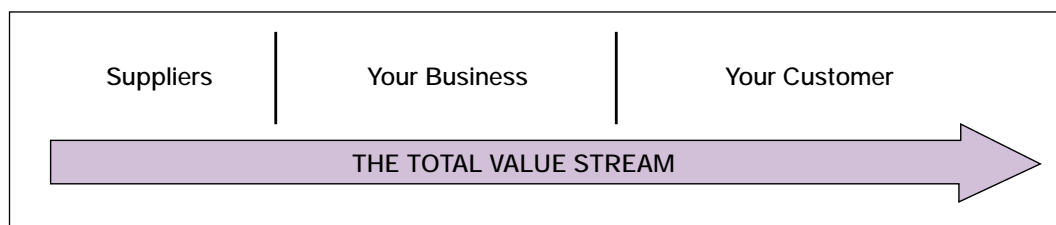
Even if you are a world leader in your industry, it is no guarantee of a future. You must be constantly improving faster than your competitors to grow or even maintain profitability.

This need to improve is almost universally recognised. But you need to know where your improvement effort should be focused to achieve the best results.

In many cases, it is relatively simple to make a short term cost saving. What is much more important is sustained cost reduction. But this is not so simple to achieve.

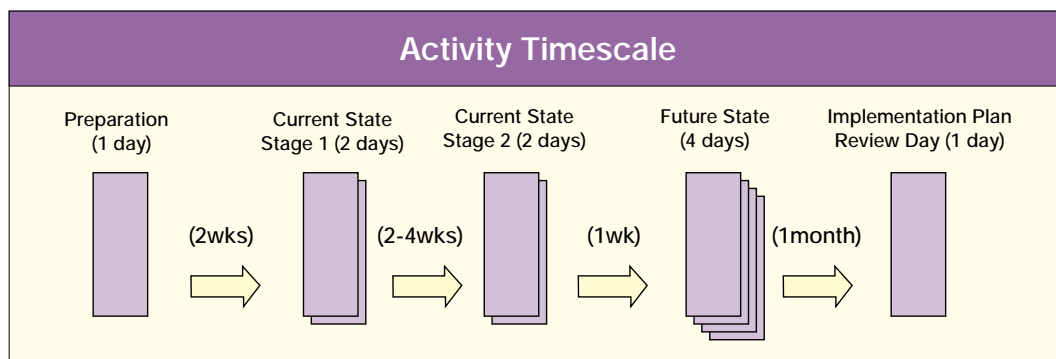
The key to reaching and sustaining world leading competitiveness is not a series of randomly selected improvement events. It is to have a vision of the future state of a process and a strategic plan for making that vision a reality.

The Value Stream Mapping process does not have to be confined to your own shop floor. It can also include the interface between you, your suppliers and your customers.



Activity Timescale

At Industry Forum we use a ten day Value Stream Mapping activity. Spread over three months, it will teach your team the step by step approach to identifying and prioritising real improvements.



"For us it is a tool that enables the value stream to be examined both inside Perkins and beyond it. Working with our suppliers we can use measurement and the maps to identify areas of greatest potential improvement."

JIM SHAW -
PERKINS ENGINES

What is Value Stream Mapping?

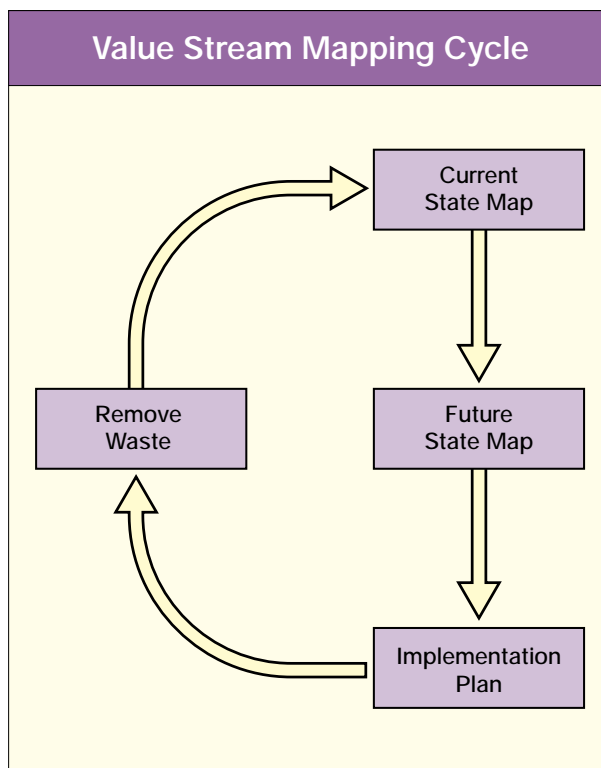
A Value Stream is the sequence of all the actions necessary to take a product from raw material to a deliverable customer item.

Value Stream Mapping is a diagnostic tool. It allows you to visualise the activities involved in delivering your product to your customer, from the perspectives of both the product and information flow.

The mapping process helps you to identify every process in the flow and to differentiate value from waste. You can then tackle the root cause of the waste.

The implementation plan defines the priority for your improvement activities. It also details the amount of time and resource necessary.

Value Stream Mapping follows the cycle below:



Current State Map

Shows material flow, information flow and both the order and performance of production processes. It also highlights current waste.

Future State Map

This is the team's vision of the 'ideal' condition in which the wastes identified in the current state map have been eliminated.

Implementation Plan

A detailed action plan prioritised according to costs and benefits that will make the future state a reality.

"Drawing a future state map is similar to moving your process to a greenfield site. You start with a clean sheet of paper."

DAVID BLOWS -
LEAN MANUFACTURING
DEVELOPMENT ENGINEER,
PERKINS ENGINES

How can you benefit from Value Stream Mapping?

Value Stream Mapping with Industry Forum lets you take an overview of your business operation. It then helps you to develop strategic and tactical action plans that will deliver savings to the bottom line.

Through Value Stream Mapping you will have the opportunity to:

- Align your business to your customers' demands.
- Reduce your lead-times.
- Increase your value adding time.
- Reduce cost.

In achieving all this you will expose issues of quality, cost, information and organisation, all of which you will need to address.

Although none of these is insurmountable, every organisation has finite resources and it is therefore essential to focus your activities and maximise the potential for improvement.

From activities facilitated by SMMT Industry Forum Engineers, the following benefits have been identified as part of a Future State:

- Lead times reduced from 7 weeks to 4 weeks.
- Inventory reduced by 53%.
- Internal Right First Time improved by 61%.
- % of Value Adding Activities increased by 350%.

How to get involved.

Industry Forum is a collaboration between prime manufacturers and their supply chains across industry sectors. It is totally committed to helping businesses like yours develop and sustain world leading competitiveness.

Our Value Stream Mapping programme is designed to provide the framework for a continuing structured approach to improvement.

The programmes we have developed represent a unique opportunity for the British supply industry to be the first to apply global best practice consistently through the entire supply chain. And, in doing so, gain a real competitive edge in the world market.

These are programmes your company needs.
To benefit from one of our programmes, please contact:
Geoff Dale - 0121 717 6600

"We see Value Stream Mapping as the means to prioritise improvement activities and flow their benefits through to the bottom line"

ADRIAN NYLAND -
QUALITY MANAGER
DOWTY AEROSPACE
PROPELLERS